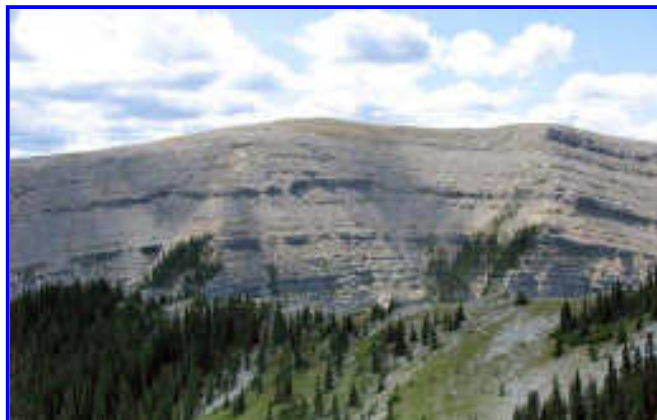


Chapter 5 - Forty Winks - 00 23 10



DVD capture



Contributed photo

DVD Time Code = 00 23 10

Location: Hwy 66, Moose Mountain

GPS: 50d 56m 23.64s -114d 48m 37.26s

Map / Satellite Image: [Google Link](#)

Site Name: Sheep Procession #2

Travel Directions:

From Hwy 1 (Trans-Canada Hwy), take Exit 161A “Bragg Creek Rd / Hwy 22.” Go south on Hwy 22 approximately 17.4 km to the 4-way stop in Bragg Creek. (Do not follow the “Bragg Creek West” sign.) Turn left at the 4-way stop (continue on Hwy 22) and go 3.4 km to the “T” intersection of Hwy 22 and Hwy 66. Turn right (west) onto Hwy 66 and go approximately 13.9 km to Moose Mountain Road. Turn right (north) onto Moose Mountain Road and follow it 7.0 km to the well-marked trailhead. The trail begins in the trees at the green vehicle barrier, located on the south side of the parking area. The site is about 0.5 km beyond the tree line to the southwest (left). (Note: Moose Mountain Road is unmarked; it is just west of the “Paddy’s Flat” sign on Hwy 66.)

The Moose Mountain summit is 7.1 km from the parking area and trailhead, gaining 477 m (1,565') in elevation. Allowing time to explore filming locations, budget a total of 4 to 5 hours for a rewarding hike to and from the vast Moose Mountain meadows, where several sheep herding scenes were filmed. Mornings generally provide the most reliable weather conditions. See:

<http://www.braggcreek.ca/kananaskis/trails/moosemtn.htm>

http://www.braggcreek.ca/kananaskis/trails/moose_prairie.htm

<http://www.braggcreek.ca/kananaskis/outdoor.htm>

The hike to the meadows is a moderately strenuous ascent. Though no filming took place above the meadows, the adventurous may wish to keep climbing to the summit using a series of switchbacks leading to a fire lookout station. Budget approximately 50 minutes for the final ascent, along slippery shale surfaces.

Remarks:

Forester Joe Burritt and his wife Dale, who for five years have spent their summers living in perfect solitude at the fire tower atop Moose Mountain, were amazed by the intense activity that took place in their front yard one morning in July 2004. Dozens of trucks, hundreds of sheep, indeed a small city, invaded their island in the sky, and, two days later, disappeared without a trace.

The Burritts, who make a 7 km mountain hike every time they leave home, welcome visitors to their magnificent perch but not into their home, which is neither a public washroom nor a watering station. Please bring your drinking water with you. Should the need arise, kindly use the same washroom facilities that were available to Ennis and Jack during their time here!

For pictures taken during filming, see the “Dale & Joe Burritt Moose Mountain Production Photos” in **Albums**.

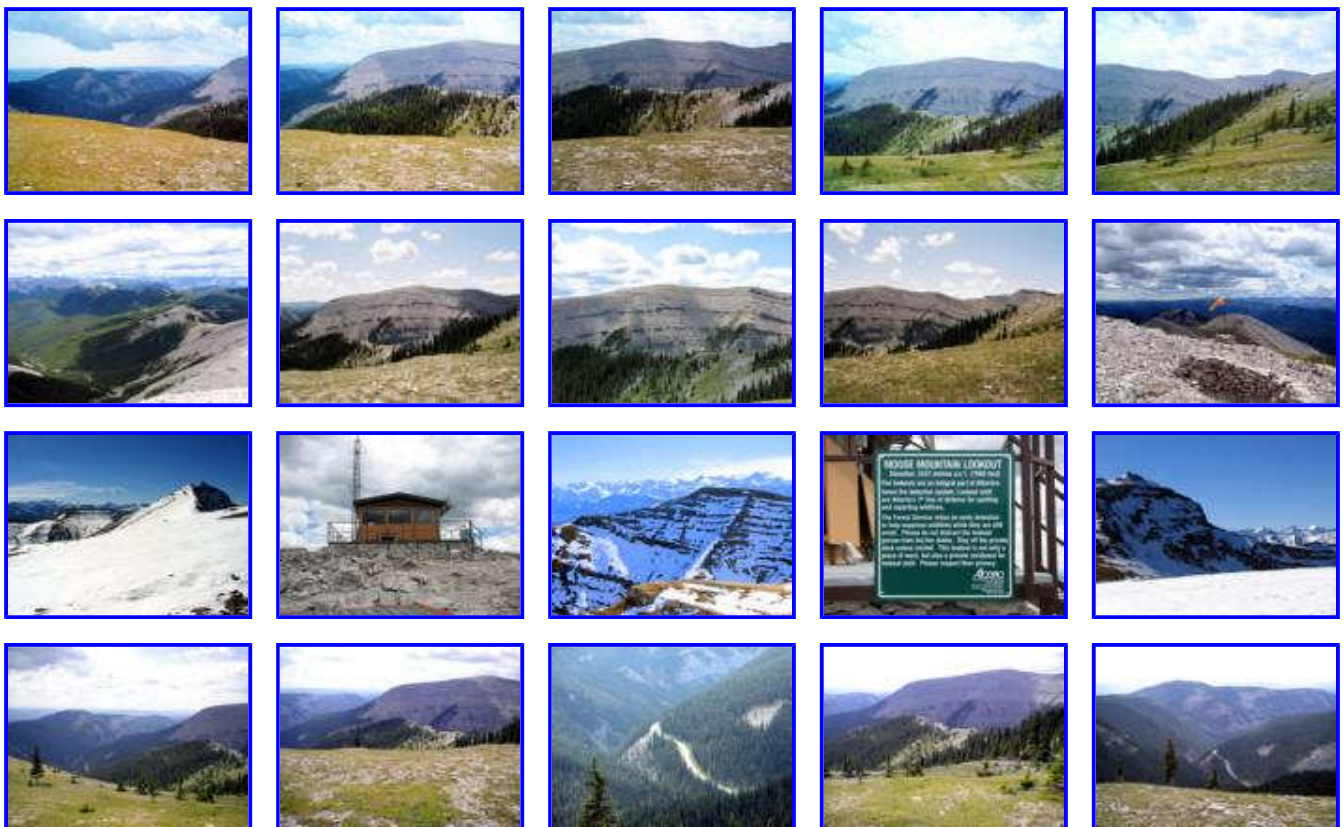
Important:

Vehicle access to the trailhead and parking area is subject to seasonal closure, usually opening in mid-May and closing after Canadian Thanksgiving (the second Monday in October). Note: For intermediate and experienced hikers. Wear hiking boots. Take ample water and protective gear. Never leave valuables in a car at trailheads. Use caution; bear activity is common in this area, and in all mountain locations. See:

<http://srd.alberta.ca/RecreationPublicUse/AlbertaBearSmart/BearsOutdoorRecreation.aspx>

Always consult park wardens and take appropriate precautions.

Pictures of surrounding area:



Revised 08 April 2013

Chapter 5 - Forty Winks - 00 23 15



DVD capture



Contributed photo

DVD Time Code = 00 23 15

Location: Hwy 66, Moose Mountain

GPS: 50d 56m 25.56s -114d 48m 40.92s

Map / Satellite Image: [Google Link](#)

Site Name: Sheep Procession #2

Travel Directions:

From Hwy 1 (Trans-Canada Hwy), take Exit 161A “Bragg Creek Rd / Hwy 22.” Go south on Hwy 22 approximately 17.4 km to the 4-way stop in Bragg Creek. (Do not follow the “Bragg Creek West” sign.) Turn left at the 4-way stop (continue on Hwy 22) and go 3.4 km to the “T” intersection of Hwy 22 and Hwy 66. Turn right (west) onto Hwy 66 and go approximately 13.9 km to Moose Mountain Road. Turn right (north) onto Moose Mountain Road and follow it 7.0 km to the well-marked trailhead. The trail begins in the trees at the green vehicle barrier, located on the south side of the parking area. The site is about 0.6 km beyond the tree line to the southwest (left). (Note: Moose Mountain Road is unmarked; it is just west of the “Paddy’s Flat” sign on Hwy 66.)

The Moose Mountain summit is 7.1 km from the parking area and trailhead, gaining 477 m (1,565') in elevation. Allowing time to explore filming locations, budget a total of 4 to 5 hours for a rewarding hike to and from the vast Moose Mountain meadows, where several sheep herding scenes were filmed. Mornings generally provide the most reliable weather conditions. See:

<http://www.braggcreek.ca/kananaskis/trails/moosemtn.htm>

http://www.braggcreek.ca/kananaskis/trails/moose_prairie.htm

<http://www.braggcreek.ca/kananaskis/outdoor.htm>

The hike to the meadows is a moderately strenuous ascent. Though no filming took place above the meadows, the adventurous may wish to keep climbing to the summit using a series of switchbacks leading to a fire lookout station. Budget approximately 50 minutes for the final ascent, along slippery shale surfaces.

Remarks:

Opposite the canyon here is Powder Face Ridge. It is also visible from nearby Canyon Creek, home to Campsite #1.

The filmmakers had a problem finding the “right” mountain. The story suggests Brokeback is a

mountain with two levels. Many mountains were considered, some as far away as the U.S. border, but problems with site access and wildlife safety left the producers with Moose Mountain.

Various shots from other locations were used to make the trek to the two campsites appear to be much longer and higher than it really is. Indeed, the elevation of Campsite #2 is actually 488 m (1,600') lower than that of this site.

Important:

Vehicle access to the trailhead and parking area is subject to seasonal closure, usually opening in mid-May and closing after Canadian Thanksgiving (the second Monday in October). Note: For intermediate and experienced hikers. Wear hiking boots. Take ample water and protective gear. Never leave valuables in a car at trailheads. Use caution; bear activity is common in this area, and in all mountain locations. See:

<http://srd.alberta.ca/RecreationPublicUse/AlbertaBearSmart/BearsOutdoorRecreation.aspx>

Always consult park wardens and take appropriate precautions.

Pictures of surrounding area:



Revised 08 April 2013

Chapter 5 - Forty Winks - 00 23 22



DVD capture



Contributed photo

DVD Time Code = 00 23 22

Location: Hwy 66, Moose Mountain

GPS: 50d 56m 23.64s -114d 48m 37.26s

Map / Satellite Image: [Google Link](#)

Site Name: Sheep Procession #2

Travel Directions:

From Hwy 1 (Trans-Canada Hwy), take Exit 161A “Bragg Creek Rd / Hwy 22.” Go south on Hwy 22 approximately 17.4 km to the 4-way stop in Bragg Creek. (Do not follow the “Bragg Creek West” sign.) Turn left at the 4-way stop (continue on Hwy 22) and go 3.4 km to the “T” intersection of Hwy 22 and Hwy 66. Turn right (west) onto Hwy 66 and go approximately 13.9 km to Moose Mountain Road. Turn right (north) onto Moose Mountain Road and follow it 7.0 km to the well-marked trailhead. The trail begins in the trees at the green vehicle barrier, located on the south side of the parking area. The site is about 0.5 km beyond the tree line to the north (right). (Note: Moose Mountain Road is unmarked; it is just west of the “Paddy’s Flat” sign on Hwy 66.)

The Moose Mountain summit is 7.1 km from the parking area and trailhead, gaining 477 m (1,565') in elevation. Allowing time to explore filming locations, budget a total of 4 to 5 hours for a rewarding hike to and from the vast Moose Mountain meadows, where several sheep herding scenes were filmed. Mornings generally provide the most reliable weather conditions. See:

<http://www.braggcreek.ca/kananaskis/trails/moosemtn.htm>

http://www.braggcreek.ca/kananaskis/trails/moose_prairie.htm

<http://www.braggcreek.ca/kananaskis/outdoor.htm>

The hike to the meadows is a moderately strenuous ascent. Though no filming took place above the meadows, the adventurous may wish to keep climbing to the summit using a series of switchbacks leading to a fire lookout station. Budget approximately 50 minutes for the final ascent, along slippery shale surfaces.

Remarks:

The fact that *Brokeback* was a “gay cowboy movie” was not the only thing that got in the filmmakers’ way. After the cast and funding were in place and plans had been made to use hundreds of sheep, the producers learned that domestic sheep carry bacteria, *Pasteurella*, that can readily devastate populations of wild cloven hoofed animals. See:

<http://www.cnr.uidaho.edu/range456/hot-topics/wildlife-livestock.htm>

Having suffered problems with other film productions where a single domestic animal escaped and caused a widespread epidemic, Provincial wildlife authorities refused to permit the use of a herd of domestic sheep in such vulnerable natural areas.

Although it was possible to use clever editing to work around their sheep problem, Lee insisted upon authenticity. Lawyers and biologists spent months in negotiations to secure permission to use domestic sheep in the Moose Mountain and Stoney Reserve locations. In the end, the filmmakers agreed to overlay the natural grass with panels of grass-covered plastic, so that the sites would remain uncontaminated.

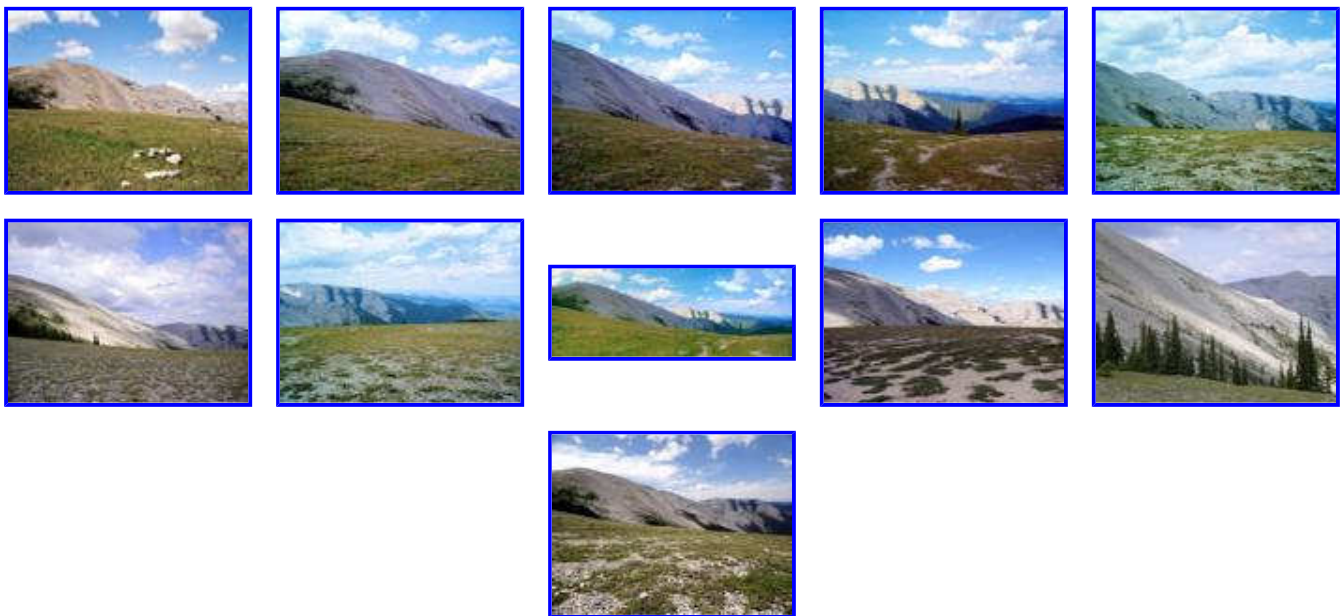
Important:

Vehicle access to the trailhead and parking area is subject to seasonal closure, usually opening in mid-May and closing after Canadian Thanksgiving (the second Monday in October). Note: For intermediate and experienced hikers. Wear hiking boots. Take ample water and protective gear. Never leave valuables in a car at trailheads. Use caution; bear activity is common in this area, and in all mountain locations. See:

<http://srd.alberta.ca/RecreationPublicUse/AlbertaBearSmart/BearsOutdoorRecreation.aspx>

Always consult park wardens and take appropriate precautions.

Pictures of surrounding area:

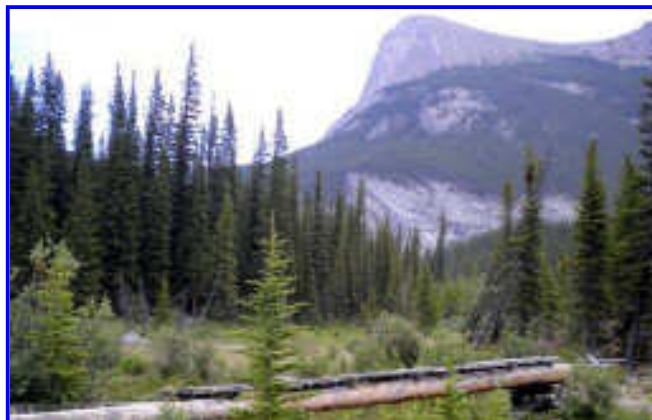


Revised 29 December 2014

Chapter 5 - Forty Winks - 00 23 28



DVD capture



Contributed photo

DVD Time Code = 00 23 28

Location: Hwy 742, Goat Creek

GPS: 51d 3m 35.52s -115d 25m 51.54s

Map / Satellite Image: [Google Link](#)

Site Name: Pole Bridge

Travel Directions:

The Pole Bridge (Campsite #2) is at the northern end of Spray Valley Provincial Park, off Hwy 742, 7.3 km south of the Three Sisters Drive intersection in Canmore, and 2.1 km north of the Riding Ridge. The easiest way to access the site is to follow Hwy 742 and park at the Goat Creek Picnic Area. Walk south along Hwy 742 for approximately 200 meters. At the point where the utility lines cross Hwy 742 you will see a gravel road to your right (west). Turn right and follow the gravel road approximately 0.7 km downhill until you reach a clearing. Turn right and continue across the clearing, passing the “Get Goin’, Cowboy” Hillside (Fight Hill), and the Dozy Embrace site. If you encounter temporary fencing in this area, go around it to the right. As you approach Goat Creek, you will see the familiar pole bridge and campsite. For pictures taken during a hike to this location, see “Hike to Campsite #2” in **Albums**.

To reach Hwy 742 (also known as Spray Lakes Rd. / Smith-Dorrien Rd.): From Hwy 1 (Trans-Canada Hwy), use Exit 91 “Hwy 1A - Canmore.” Follow Bow Valley Trail 2.2 km, turn left (northwest) onto Railway Ave. Proceed 0.5 km and turn left (west) at Main St. (also known as 8th St.), go 0.6 km and turn left (south) onto Bridge Rd. (also known as 8th Ave. / Rundle Drive). At the “T” intersection, turn left (south) on Three Sisters Drive, proceed 0.6 km and turn right (west) at Spray Lakes Rd. (also known as Hwy 742). (Or simply follow the helpful “Kananaskis Country” signs throughout Canmore.) See map of [Canmore](#).

Remarks:

If the second campsite has an icon, it is, of course, the pole bridge. The bridge deck features a series of sequentially numbered metal plates and corresponding notches. Though we can imagine some humorous explanations, these probably served another purpose. Perhaps you know what they were for. If so, please tell us.

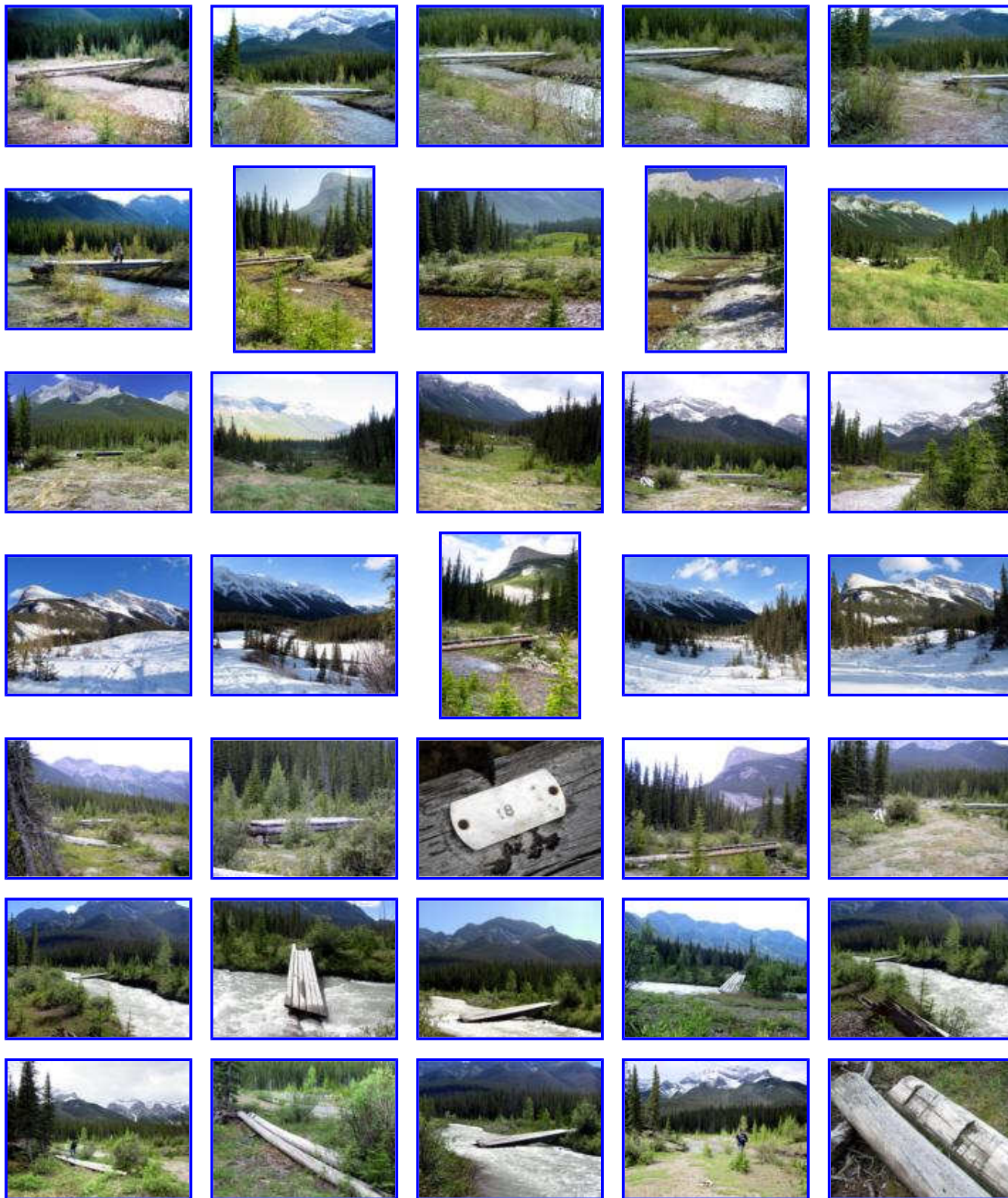
[Update: Sadly, the pole bridge was washed out by high water in 2011.]

See:

<http://www.albertaparks.ca/spray-valley/information-facilities/day-use/goat-creek.aspx?id=st->

day:8158

Pictures of surrounding area:





Revised 29 December 2014

Chapter 5 - Forty Winks - 00 23 39



DVD capture



Contributed photo

DVD Time Code = 00 23 39

Location: Hwy 742, Goat Creek

GPS: 51d 3m 36.96s -115d 25m 51.36s

Map / Satellite Image: [Google Link](#)

Site Name: Campsite #2

Travel Directions:

Campsite #2 is at the northern end of Spray Valley Provincial Park, off Hwy 742, 7.3 km south of the Three Sisters Drive intersection in Canmore, and 2.1 km north of the Riding Ridge. The easiest way to access the site is to follow Hwy 742 and park at the Goat Creek Picnic Area. Walk south along Hwy 742 for approximately 200 meters. At the point where the utility lines cross Hwy 742 you will see a gravel road to your right (west). Turn right and follow the gravel road approximately 0.7 km downhill until you reach a clearing. Turn right and continue across the clearing, passing the “Get Goin’, Cowboy” Hillside (Fight Hill), and the Dozy Embrace site. If you encounter temporary fencing in this area, go around it to the right. As you approach Goat Creek, you will see the familiar pole bridge and campsite. For pictures taken during a hike to this location, see “Hike to Campsite #2” in **Albums**.

To reach Hwy 742 (also known as Spray Lakes Rd. / Smith-Dorrien Rd.): From Hwy 1 (Trans-Canada Hwy), use Exit 91 “Hwy 1A - Canmore.” Follow Bow Valley Trail 2.2 km, turn left (northwest) onto Railway Ave. Proceed 0.5 km and turn left (west) at Main St. (also known as 8th St.), go 0.6 km and turn left (south) onto Bridge Rd. (also known as 8th Ave. / Rundle Drive). At the “T” intersection, turn left (south) on Three Sisters Drive, proceed 0.6 km and turn right (west) at Spray Lakes Rd. (also known as Hwy 742). (Or simply follow the helpful “Kananaskis Country” signs throughout Canmore.) See map of [Canmore](#).

Remarks:

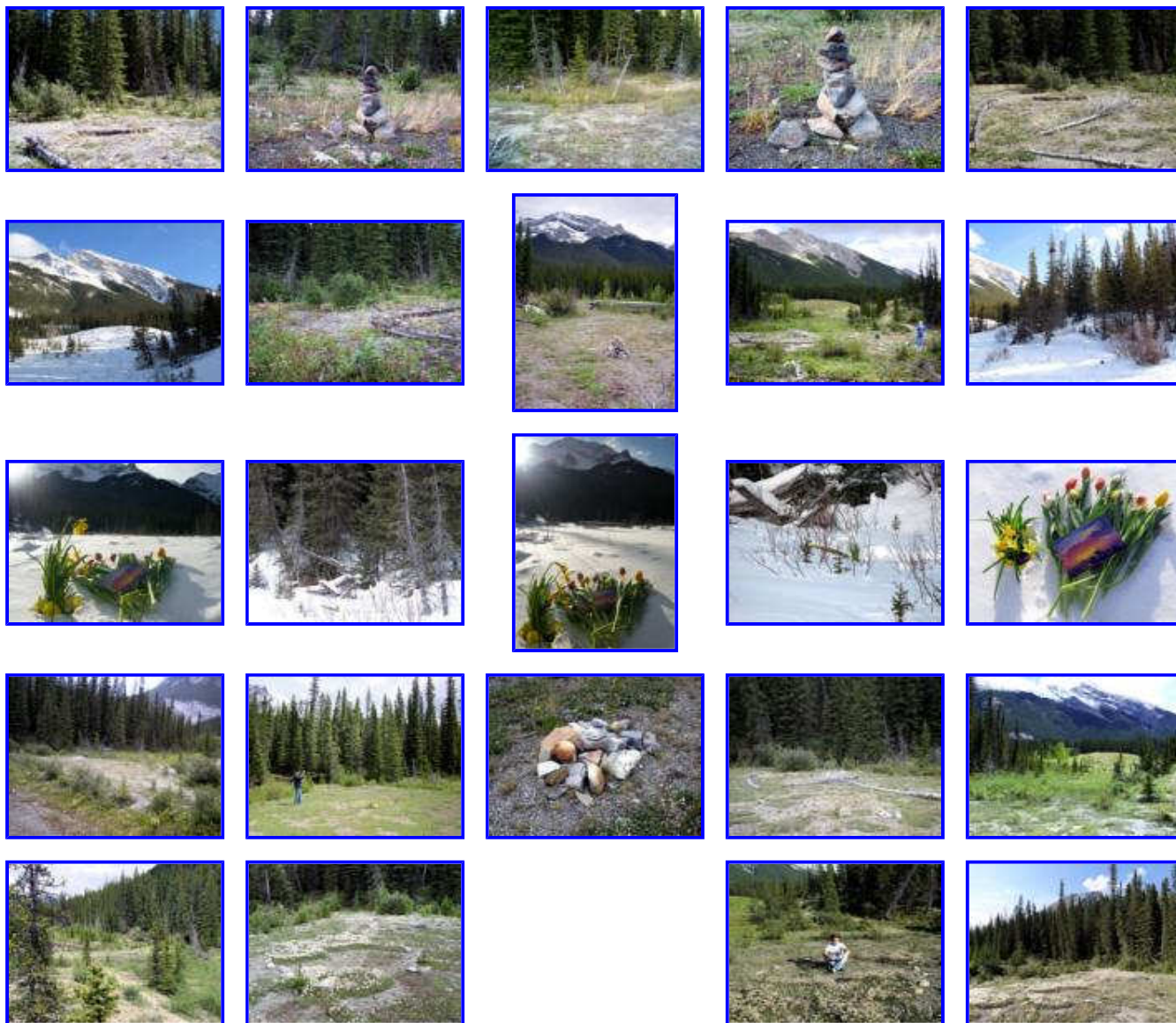
That so-very-memorable tent occupied a clearing near the creek that is still visible. Indeed the campfire, pole bridge, grassy hill, and creek all “look right.” See:

<http://www.albertaparks.ca/spray-valley/information-facilities/day-use/goat-creek.aspx?id=st-day:8158>

Quotation:

“Tent don’t look right.”

Pictures of surrounding area:



Revised 29 December 2014

Chapter 5 - Forty Winks - 00 24 09



DVD capture



Contributed photo

DVD Time Code = 00 24 09

Location: Hwy 742, Goat Creek

GPS: 51d 3m 36.96s -115d 25m 51.36s

Map / Satellite Image: [Google Link](#)

Site Name: Campsite #2

Travel Directions:

Campsite #2 is at the northern end of Spray Valley Provincial Park, off Hwy 742, 7.3 km south of the Three Sisters Drive intersection in Canmore, and 2.1 km north of the Riding Ridge. The easiest way to access the site is to follow Hwy 742 and park at the Goat Creek Picnic Area. Walk south along Hwy 742 for approximately 200 meters. At the point where the utility lines cross Hwy 742 you will see a gravel road to your right (west). Turn right and follow the gravel road approximately 0.7 km downhill until you reach a clearing. Turn right and continue across the clearing, passing the “Get Goin’, Cowboy” Hillside (Fight Hill), and the Dozy Embrace site. If you encounter temporary fencing in this area, go around it to the right. As you approach Goat Creek, you will see the familiar pole bridge and campsite. For pictures taken during a hike to this location, see “Hike to Campsite #2” in **Albums**.

To reach Hwy 742 (also known as Spray Lakes Rd. / Smith-Dorrien Rd.): From Hwy 1 (Trans-Canada Hwy), use Exit 91 “Hwy 1A - Canmore.” Follow Bow Valley Trail 2.2 km, turn left (northwest) onto Railway Ave. Proceed 0.5 km and turn left (west) at Main St. (also known as 8th St.), go 0.6 km and turn left (south) onto Bridge Rd. (also known as 8th Ave. / Rundle Drive). At the “T” intersection, turn left (south) on Three Sisters Drive, proceed 0.6 km and turn right (west) at Spray Lakes Rd. (also known as Hwy 742). (Or simply follow the helpful “Kananaskis Country” signs throughout Canmore.) See map of [Canmore](#).

Remarks:

You are looking westward at the Goat Range. Its namesake, Goat Creek, flows by Campsite #2, forming the western boundary of the park. The Goat Range is one of many smaller mountain groups which abut Canada’s majestic Rocky Mountains.

How did these mountains all come to be here? Some 175 million years ago, geologists believe that the Pacific and the North American continental plates collided. Over the next 55 million years mounting pressures and consequent forces resulted in the massive uplift of the Canadian Rocky Mountains. A second tectonic collision roughly 85 million years ago formed the foothills and ancillary ranges, of which the Goat Range is one. See:

<http://www.mountainnature.com/geology/platetectonics.htm>

Pictures of surrounding area:



Revised 28 January 2015

Chapter 5 - Forty Winks - 00 24 14



DVD capture



Contributed photo

DVD Time Code = 00 24 14

Location: Hwy 742, Goat Creek

GPS: 51d 3m 35.52s -115d 25m 51.54s

Map / Satellite Image: [Google Link](#)

Site Name: Pole Bridge

Travel Directions:

The Pole Bridge (Campsite #2) is at the northern end of Spray Valley Provincial Park, off Hwy 742, 7.3 km south of the Three Sisters Drive intersection in Canmore, and 2.1 km north of the Riding Ridge. The easiest way to access the site is to follow Hwy 742 and park at the Goat Creek Picnic Area. Walk south along Hwy 742 for approximately 200 meters. At the point where the utility lines cross Hwy 742 you will see a gravel road to your right (west). Turn right and follow the gravel road approximately 0.7 km downhill until you reach a clearing. Turn right and continue across the clearing, passing the “Get Goin’, Cowboy” Hillside (Fight Hill), and the Dozy Embrace site. If you encounter temporary fencing in this area, go around it to the right. As you approach Goat Creek, you will see the familiar pole bridge and campsite. For pictures taken during a hike to this location, see “Hike to Campsite #2” in **Albums**.

To reach Hwy 742 (also known as Spray Lakes Rd. / Smith-Dorrien Rd.): From Hwy 1 (Trans-Canada Hwy), use Exit 91 “Hwy 1A - Canmore.” Follow Bow Valley Trail 2.2 km, turn left (northwest) onto Railway Ave. Proceed 0.5 km and turn left (west) at Main St. (also known as 8th St.), go 0.6 km and turn left (south) onto Bridge Rd. (also known as 8th Ave. / Rundle Drive). At the “T” intersection, turn left (south) on Three Sisters Drive, proceed 0.6 km and turn right (west) at Spray Lakes Rd. (also known as Hwy 742). (Or simply follow the helpful “Kananaskis Country” signs throughout Canmore.) See map of [Canmore](#).

Remarks:

Campsite #2 is remarkable in many respects. Its silence, for instance. Although it is quite close to the road (Highway 742) and equally close to a small hydroelectric generation station, the surrounding mountains and hills insulate it to the point that all we hear in this scene is Jack’s animated singing.

Quotation:

“What exactly is the Pentecost?”

Pictures of surrounding area:



Revised 24 April 2011

Chapter 5 - Forty Winks - 00 24 16



DVD capture



Contributed photo

DVD Time Code = 00 24 16

Location: Hwy 742, Goat Creek

GPS: 51d 3m 35.52s -115d 25m 51.54s

Map / Satellite Image: [Google Link](#)

Site Name: Pole Bridge

Travel Directions:

The Pole Bridge (Campsite #2) is at the northern end of Spray Valley Provincial Park, off Hwy 742, 7.3 km south of the Three Sisters Drive intersection in Canmore, and 2.1 km north of the Riding Ridge. The easiest way to access the site is to follow Hwy 742 and park at the Goat Creek Picnic Area. Walk south along Hwy 742 for approximately 200 meters. At the point where the utility lines cross Hwy 742 you will see a gravel road to your right (west). Turn right and follow the gravel road approximately 0.7 km downhill until you reach a clearing. Turn right and continue across the clearing, passing the “Get Goin’, Cowboy” Hillside (Fight Hill), and the Dozy Embrace site. If you encounter temporary fencing in this area, go around it to the right. As you approach Goat Creek, you will see the familiar pole bridge and campsite. For pictures taken during a hike to this location, see “Hike to Campsite #2” in **Albums**.

To reach Hwy 742 (also known as Spray Lakes Rd. / Smith-Dorrien Rd.): From Hwy 1 (Trans-Canada Hwy), use Exit 91 “Hwy 1A - Canmore.” Follow Bow Valley Trail 2.2 km, turn left (northwest) onto Railway Ave. Proceed 0.5 km and turn left (west) at Main St. (also known as 8th St.), go 0.6 km and turn left (south) onto Bridge Rd. (also known as 8th Ave. / Rundle Drive). At the “T” intersection, turn left (south) on Three Sisters Drive, proceed 0.6 km and turn right (west) at Spray Lakes Rd. (also known as Hwy 742). (Or simply follow the helpful “Kananaskis Country” signs throughout Canmore.) See map of [Canmore](#).

Remarks:

Campsite #2 is high on every *Brokeback* pilgrim’s list of places to savor. It boasts an unmatched assortment of memorable settings. The tent area, the “Get Goin’, Cowboy” Hillside (Fight Hill), the Pole Bridge, and, of course, the Dozy Embrace site, make for a remarkable visit.

Yes, there is a lot to photograph, but do reserve a bit of time to reflect upon the spirit of this place and the beauty of what happened here.

Quotation:

“You may be a sinner but I ain’t yet had the opportunity.”

Pictures of surrounding area:



Revised 29 April 2014

Chapter 5 - Forty Winks - 00 24 22



DVD capture



Contributed photo

DVD Time Code = 00 24 22

Location: Hwy 742, Goat Creek

GPS: 51d 3m 36.3s -115d 25m 52.4s

Map / Satellite Image: [Google Link](#)

Site Name: Campsite #2

Travel Directions:

Campsite #2 is at the northern end of Spray Valley Provincial Park, off Hwy 742, 7.3 km south of the Three Sisters Drive intersection in Canmore, and 2.1 km north of the Riding Ridge. The easiest way to access the site is to follow Hwy 742 and park at the Goat Creek Picnic Area. Walk south along Hwy 742 for approximately 200 meters. At the point where the utility lines cross Hwy 742 you will see a gravel road to your right (west). Turn right and follow the gravel road approximately 0.7 km downhill until you reach a clearing. Turn right and continue across the clearing, passing the “Get Goin’, Cowboy” Hillside (Fight Hill), and the Dozy Embrace site. If you encounter temporary fencing in this area, go around it to the right. As you approach Goat Creek, you will see the familiar pole bridge and campsite. For pictures taken during a hike to this location, see “Hike to Campsite #2” in **Albums**.

To reach Hwy 742 (also known as Spray Lakes Rd. / Smith-Dorrien Rd.): From Hwy 1 (Trans-Canada Hwy), use Exit 91 “Hwy 1A - Canmore.” Follow Bow Valley Trail 2.2 km, turn left (northwest) onto Railway Ave. Proceed 0.5 km and turn left (west) at Main St. (also known as 8th St.), go 0.6 km and turn left (south) onto Bridge Rd. (also known as 8th Ave. / Rundle Drive). At the “T” intersection, turn left (south) on Three Sisters Drive, proceed 0.6 km and turn right (west) at Spray Lakes Rd. (also known as Hwy 742). (Or simply follow the helpful “Kananaskis Country” signs throughout Canmore.) See map of [Canmore](#).

Remarks:

Note in the photos how prop trees were used to mask the rather conspicuous pathway on the right side of the “Get Goin’, Cowboy” Hillside (Fight Hill). If you look in the woods you’ll find these discarded trees which are easy to identify by the metal spikes mounted at their base. Campsite #2 has other artifacts, as well. Should you find something that others might enjoy, please let it be.

Pictures of surrounding area:



Revised 24 April 2011

Chapter 5 - Forty Winks - 00 27 45



DVD capture



Contributed photo

DVD Time Code = 00 27 45

Location: Calgary, AB, Springbank Park For All Seasons, 32224 Springbank Road

GPS: 51d 4m 3s -114d 20m 54s

Map / Satellite Image: [Google Link](#)

Site Name: Tent Interior

Travel Directions:

From Hwy 1 (Trans-Canada Hwy), take Exit 169 South. Proceed south on Range Road 33 (181 St.) 2.4 km to intersection of Springbank Road. The building is on the NE corner of the intersection, attached to Springbank Community High School.

Remarks:

The tent interior was filmed not in the scenic mountains of western Alberta but, instead, at a makeshift sound stage constructed on a curling rink just west of Calgary.

Curling is one of Canada's favorite winter sports. Sometimes called "chess on ice," it requires analytical forethought and an expert understanding of both mechanics and plane geometry. A curling rink is hardly a venue one would ordinarily associate with activity which, as Anne Proulx tells us, requires no instruction manual.

See also DVD Chapter 12, [01 05 29](#), Motel (Interior).

Quotation:

"What're you doin'?"

Pictures of surrounding area:





Revised 11 June 2013