

Chapter 6 - First Light - 00 29 43



DVD capture



Contributed photo

DVD Time Code = 00 29 43

Location: Hwy 742, Goat Creek

GPS: 51d 3m 36.96s -115d 25m 51.36s

Map / Satellite Image: [Google Link](#)

Site Name: Campsite #2

Travel Directions:

Campsite #2 is at the northern end of Spray Valley Provincial Park, off Hwy 742, 7.3 km south of the Three Sisters Drive intersection in Canmore, and 2.1 km north of the Riding Ridge. The easiest way to access the site is to follow Hwy 742 and park at the Goat Creek Picnic Area. Walk south along Hwy 742 for approximately 200 meters. At the point where the utility lines cross Hwy 742 you will see a gravel road to your right (west). Turn right and follow the gravel road approximately 0.7 km downhill until you reach a clearing. Turn right and continue across the clearing, passing the “Get Goin’, Cowboy” Hillside (Fight Hill), and the Dozy Embrace site. If you encounter temporary fencing in this area, go around it to the right. As you approach Goat Creek, you will see the familiar pole bridge and campsite. For pictures taken during a hike to this location, see “Hike to Campsite #2” in **Albums**.

To reach Hwy 742 (also known as Spray Lakes Rd. / Smith-Dorrien Rd.): From Hwy 1 (Trans-Canada Hwy), use Exit 91 “Hwy 1A - Canmore.” Follow Bow Valley Trail 2.2 km, turn left (northwest) onto Railway Ave. Proceed 0.5 km and turn left (west) at Main St. (also known as 8th St.), go 0.6 km and turn left (south) onto Bridge Rd. (also known as 8th Ave. / Rundle Drive). At the “T” intersection, turn left (south) on Three Sisters Drive, proceed 0.6 km and turn right (west) at Spray Lakes Rd. (also known as Hwy 742). (Or simply follow the helpful “Kananaskis Country” signs throughout Canmore.) See map of [Canmore](#).

Remarks:

Things are rarely the same the morning after and they certainly were not the same after the “FNIT” (First Night In Tent) scene. The dialog and delivery make this plain, but the shot composition does, as well. Gone are the picturesque views of the lovely creek, grassy hillside, bright sky, and inspiring mountain scenery. In their place we see a worn saddle, a canvas tent, hanging clouds, and two very confused and frightened 19-year-olds.

Pictures of surrounding area:



Revised 24 April 2011

Chapter 6 - First Light - 00 29 55



DVD capture



Contributed photo

DVD Time Code = 00 29 55

Location: Hwy 742, Goat Creek

GPS: 51d 3m 36.96s -115d 25m 51.36s

Map / Satellite Image: [Google Link](#)

Site Name: Campsite #2

Travel Directions:

Campsite #2 is at the northern end of Spray Valley Provincial Park, off Hwy 742, 7.3 km south of the Three Sisters Drive intersection in Canmore, and 2.1 km north of the Riding Ridge. The easiest way to access the site is to follow Hwy 742 and park at the Goat Creek Picnic Area. Walk south along Hwy 742 for approximately 200 meters. At the point where the utility lines cross Hwy 742 you will see a gravel road to your right (west). Turn right and follow the gravel road approximately 0.7 km downhill until you reach a clearing. Turn right and continue across the clearing, passing the “Get Goin’, Cowboy” Hillside (Fight Hill), and the Dozy Embrace site. If you encounter temporary fencing in this area, go around it to the right. As you approach Goat Creek, you will see the familiar pole bridge and campsite. For pictures taken during a hike to this location, see “Hike to Campsite #2” in **Albums**.

To reach Hwy 742 (also known as Spray Lakes Rd. / Smith-Dorrien Rd.): From Hwy 1 (Trans-Canada Hwy), use Exit 91 “Hwy 1A - Canmore.” Follow Bow Valley Trail 2.2 km, turn left (northwest) onto Railway Ave. Proceed 0.5 km and turn left (west) at Main St. (also known as 8th St.), go 0.6 km and turn left (south) onto Bridge Rd. (also known as 8th Ave. / Rundle Drive). At the “T” intersection, turn left (south) on Three Sisters Drive, proceed 0.6 km and turn right (west) at Spray Lakes Rd. (also known as Hwy 742). (Or simply follow the helpful “Kananaskis Country” signs throughout Canmore.) See map of [Canmore](#).

Remarks:

“They never talked about the sex,” [1] writes Annie Proulx. On this morning, Ennis could barely muster a nod. In this, the first of several opportunities Heath Ledger had to emote Ennis’s shame, fear, and deep pain, he rose to the challenge without uttering a word. And in “See you for supper,” Jake Gyllenhaal persuasively established Jack as the forever hopeful one.

Quotation:

“See you for supper.”

[1] *Brokeback Mountain - Story to Screenplay* by Annie Proulx, Larry McMurtry and Diana Ossana (Scribner) ISBN-13: 978-0-7432-9416-4, page 7.

Pictures of surrounding area:



Revised 28 January 2015

Chapter 6 - First Light - 00 29 58



DVD capture



Contributed photo

DVD Time Code = 00 29 58

Location: Hwy 742, Goat Creek

GPS: 51d 3m 35.52s -115d 25m 51.54s

Map / Satellite Image: [Google Link](#)

Site Name: Pole Bridge

Travel Directions:

The Pole Bridge (Campsite #2) is at the northern end of Spray Valley Provincial Park, off Hwy 742, 7.3 km south of the Three Sisters Drive intersection in Canmore, and 2.1 km north of the Riding Ridge. The easiest way to access the site is to follow Hwy 742 and park at the Goat Creek Picnic Area. Walk south along Hwy 742 for approximately 200 meters. At the point where the utility lines cross Hwy 742 you will see a gravel road to your right (west). Turn right and follow the gravel road approximately 0.7 km downhill until you reach a clearing. Turn right and continue across the clearing, passing the “Get Goin’, Cowboy” Hillside (Fight Hill), and the Dozy Embrace site. If you encounter temporary fencing in this area, go around it to the right. As you approach Goat Creek, you will see the familiar pole bridge and campsite. For pictures taken during a hike to this location, see “Hike to Campsite #2” in **Albums**.

To reach Hwy 742 (also known as Spray Lakes Rd. / Smith-Dorrien Rd.): From Hwy 1 (Trans-Canada Hwy), use Exit 91 “Hwy 1A - Canmore.” Follow Bow Valley Trail 2.2 km, turn left (northwest) onto Railway Ave. Proceed 0.5 km and turn left (west) at Main St. (also known as 8th St.), go 0.6 km and turn left (south) onto Bridge Rd. (also known as 8th Ave. / Rundle Drive). At the “T” intersection, turn left (south) on Three Sisters Drive, proceed 0.6 km and turn right (west) at Spray Lakes Rd. (also known as Hwy 742). (Or simply follow the helpful “Kananaskis Country” signs throughout Canmore.) See map of [Canmore](#).

Remarks:

The large group of us that delight in finding carefully crafted “*Brokeback* bookends” all know this unassuming image from the first day of Ennis and Jack’s life together. Its counterpart comes almost an hour-and-a-half later in the film as Ennis again departs, this time after the Dozy Embrace during Jack's Flashback (see Chapter 16, [01 49 23](#)). The composition of the two shots, the camera placement, and the subject leave no room for doubt that we are now at the beginning and later, that we have reached the end.

Pictures of surrounding area:



Revised 24 April 2011

Chapter 6 - First Light - 00 30 09



DVD capture



Contributed photo

DVD Time Code = 00 30 09

Location: Hwy 66, Moose Mountain

GPS: 50d 56m 26s -114d 48m 37s

Map / Satellite Image: [Google Link](#)

Site Name: High Ridge #1

Travel Directions:

From Hwy 1 (Trans-Canada Hwy), take Exit 161A “Bragg Creek Rd / Hwy 22.” Go south on Hwy 22 approximately 17.4 km to the 4-way stop in Bragg Creek. (Do not follow the “Bragg Creek West” sign.) Turn left at the 4-way stop (continue on Hwy 22) and go 3.4 km to the “T” intersection of Hwy 22 and Hwy 66. Turn right (west) onto Hwy 66 and go approximately 13.9 km to Moose Mountain Road. Turn right (north) onto Moose Mountain Road and follow it 7.0 km to the well-marked trailhead. The trail begins in the trees at the green vehicle barrier, located on the south side of the parking area. The site is about 0.4 km beyond the tree line to the southwest (left). (Note: Moose Mountain Road is unmarked; it is just west of the “Paddy’s Flat” sign on Hwy 66.)

The Moose Mountain summit is 7.1 km from the parking area and trailhead, gaining 477 m (1,565') in elevation. Allowing time to explore filming locations, budget a total of 4 to 5 hours for a rewarding hike to and from the vast Moose Mountain meadows, where several sheep herding scenes were filmed. Mornings generally provide the most reliable weather conditions. See:

<http://www.braggcreek.ca/kananaskis/trails/moosemtn.htm>

http://www.braggcreek.ca/kananaskis/trails/moose_prairie.htm

<http://www.braggcreek.ca/kananaskis/outdoor.htm>

The hike to the meadows is a moderately strenuous ascent. Though no filming took place above the meadows, the adventurous may wish to keep climbing to the summit using a series of switchbacks leading to a fire lookout station. Budget approximately 50 minutes for the final ascent, along slippery shale surfaces.

Remarks:

There are many mountains, and about 50 km, between Campsite #2 and Moose Mountain where the high ridge scenes were filmed, but who cares? If the director’s intent was to underscore Ennis’s lonely and troubled mood, the rocky terrain, the winds, and the elevation here certainly respond to that objective.

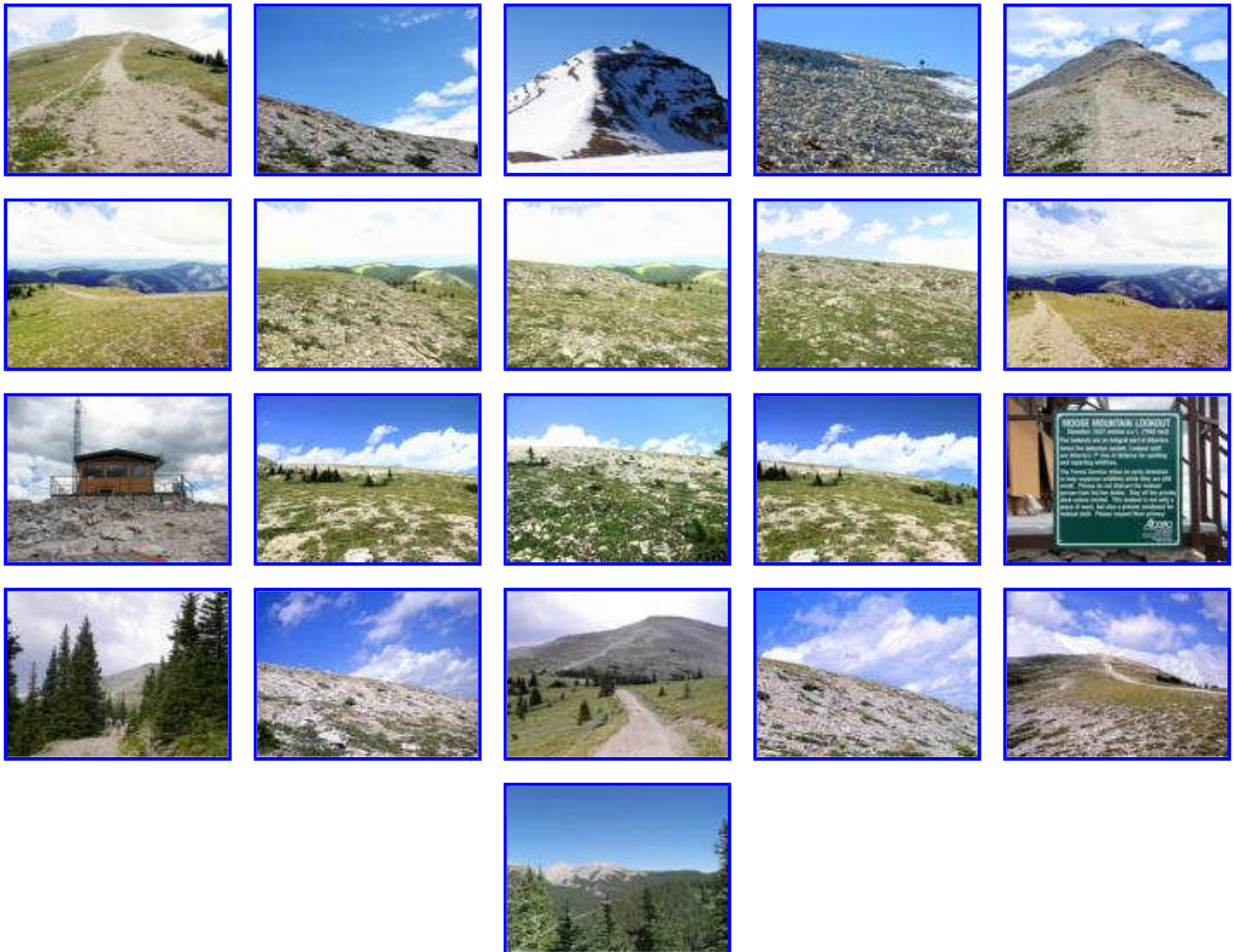
Important:

Vehicle access to the trailhead and parking area is subject to seasonal closure, usually opening in mid-May and closing after Canadian Thanksgiving (the second Monday in October). Note: For intermediate and experienced hikers. Wear hiking boots. Take ample water and protective gear. Never leave valuables in a car at trailheads. Use caution; bear activity is common in this area, and in all mountain locations. See:

<http://srd.alberta.ca/RecreationPublicUse/AlbertaBearSmart/BearsOutdoorRecreation.aspx>

Always consult park wardens and take appropriate precautions.

Pictures of surrounding area:



Revised 08 April 2013

Chapter 6 - First Light - 00 30 25



DVD capture



Contributed photo

DVD Time Code = 00 30 25

Location: Hwy 66, Moose Mountain

GPS: 50d 56m 31.14s -114d 48m 36.84s

Map / Satellite Image: [Google Link](#)

Site Name: High Ridge #2

Travel Directions:

From Hwy 1 (Trans-Canada Hwy), take Exit 161A “Bragg Creek Rd / Hwy 22.” Go south on Hwy 22 approximately 17.4 km to the 4-way stop in Bragg Creek. (Do not follow the “Bragg Creek West” sign.) Turn left at the 4-way stop (continue on Hwy 22) and go 3.4 km to the “T” intersection of Hwy 22 and Hwy 66. Turn right (west) onto Hwy 66 and go approximately 13.9 km to Moose Mountain Road. Turn right (north) onto Moose Mountain Road and follow it 7.0 km to the well-marked trailhead. The trail begins in the trees at the green vehicle barrier, located on the south side of the parking area. The site is about 0.5 km beyond the tree line to the north (right). (Note: Moose Mountain Road is unmarked; it is just west of the “Paddy’s Flat” sign on Hwy 66.)

The Moose Mountain summit is 7.1 km from the parking area and trailhead, gaining 477 m (1,565') in elevation. Allowing time to explore filming locations, budget a total of 4 to 5 hours for a rewarding hike to and from the vast Moose Mountain meadows, where several sheep herding scenes were filmed. Mornings generally provide the most reliable weather conditions. See:

<http://www.braggcreek.ca/kananaskis/trails/moosemtn.htm>

http://www.braggcreek.ca/kananaskis/trails/moose_prairie.htm

<http://www.braggcreek.ca/kananaskis/outdoor.htm>

The hike to the meadows is a moderately strenuous ascent. Though no filming took place above the meadows, the adventurous may wish to keep climbing to the summit using a series of switchbacks leading to a fire lookout station. Budget approximately 50 minutes for the final ascent, along slippery shale surfaces.

Remarks:

Moose Mountain is a place of powerful natural forces. Violent storms from the Canadian Rockies move eastward where they are channeled within its canyons. The forest ranger who lives atop Moose has measured winds exceeding 90 mph and observed golf ball-sized hail. Observe the tops of the spruce trees. The isolated white-topped ones literally broke off at the upper trunk under the stress of

Moose's hurricane-force canyon winds.

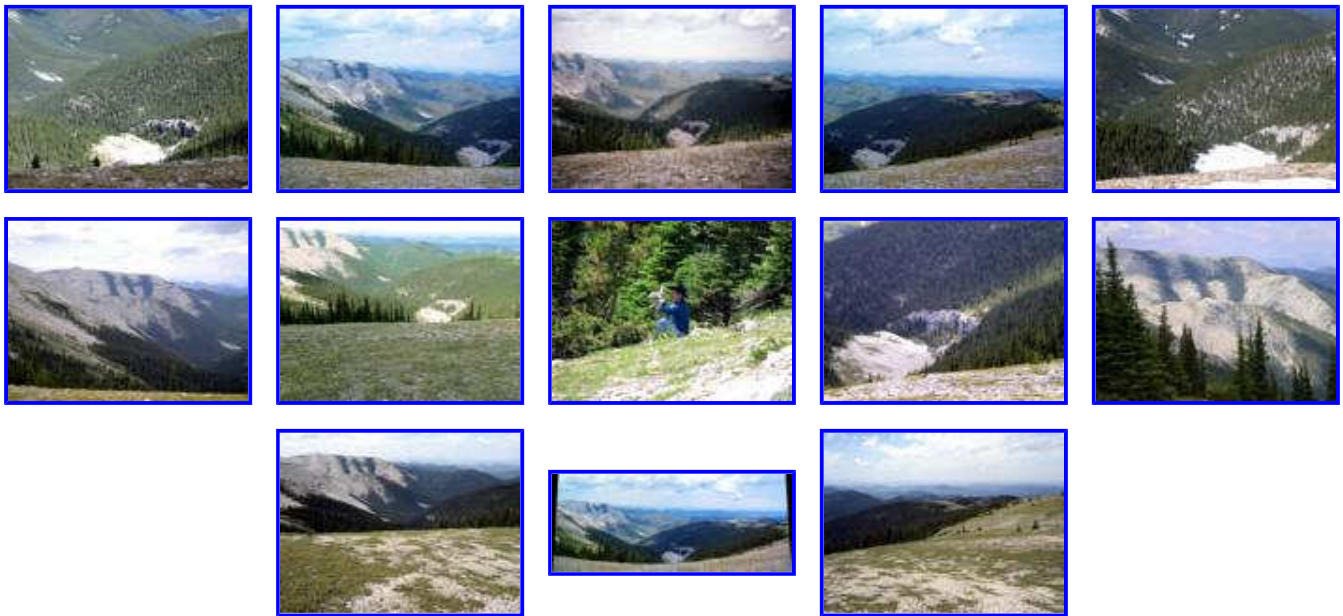
Important:

Vehicle access to the trailhead and parking area is subject to seasonal closure, usually opening in mid-May and closing after Canadian Thanksgiving (the second Monday in October). Note: For intermediate and experienced hikers. Wear hiking boots. Take ample water and protective gear. Never leave valuables in a car at trailheads. Use caution; bear activity is common in this area, and in all mountain locations. See:

<http://srd.alberta.ca/RecreationPublicUse/AlbertaBearSmart/BearsOutdoorRecreation.aspx>

Always consult park wardens and take appropriate precautions.

Pictures of surrounding area:



Revised 28 January 2015

Chapter 6 - First Light - 00 30 30



DVD capture



Contributed photo

DVD Time Code = 00 30 30

Location: Hwy 66, Moose Mountain

GPS: 50d 56m 31.14s -114d 48m 36.84s

Map / Satellite Image: [Google Link](#)

Site Name: High Ridge #2

Travel Directions:

From Hwy 1 (Trans-Canada Hwy), take Exit 161A “Bragg Creek Rd / Hwy 22.” Go south on Hwy 22 approximately 17.4 km to the 4-way stop in Bragg Creek. (Do not follow the “Bragg Creek West” sign.) Turn left at the 4-way stop (continue on Hwy 22) and go 3.4 km to the “T” intersection of Hwy 22 and Hwy 66. Turn right (west) onto Hwy 66 and go approximately 13.9 km to Moose Mountain Road. Turn right (north) onto Moose Mountain Road and follow it 7.0 km to the well-marked trailhead. The trail begins in the trees at the green vehicle barrier, located on the south side of the parking area. The site is about 0.5 km beyond the tree line to the north (right). (Note: Moose Mountain Road is unmarked; it is just west of the “Paddy’s Flat” sign on Hwy 66.)

The Moose Mountain summit is 7.1 km from the parking area and trailhead, gaining 477 m (1,565') in elevation. Allowing time to explore filming locations, budget a total of 4 to 5 hours for a rewarding hike to and from the vast Moose Mountain meadows, where several sheep herding scenes were filmed. Mornings generally provide the most reliable weather conditions. See:

<http://www.braggcreek.ca/kananaskis/trails/moosemtn.htm>

http://www.braggcreek.ca/kananaskis/trails/moose_prairie.htm

<http://www.braggcreek.ca/kananaskis/outdoor.htm>

The hike to the meadows is a moderately strenuous ascent. Though no filming took place above the meadows, the adventurous may wish to keep climbing to the summit using a series of switchbacks leading to a fire lookout station. Budget approximately 50 minutes for the final ascent, along slippery shale surfaces.

Remarks:

Although it appears that we are at the top of Moose Mountain, this is actually a meadow. A barren gravel ridge and a series of switchbacks separate this site from the mountain’s 2,437 m (7,995') summit. No *Brokeback* filming took place on this ridge, although shots from both sheep processions and the entire “I Ain’t Queer” scene were photographed nearby.

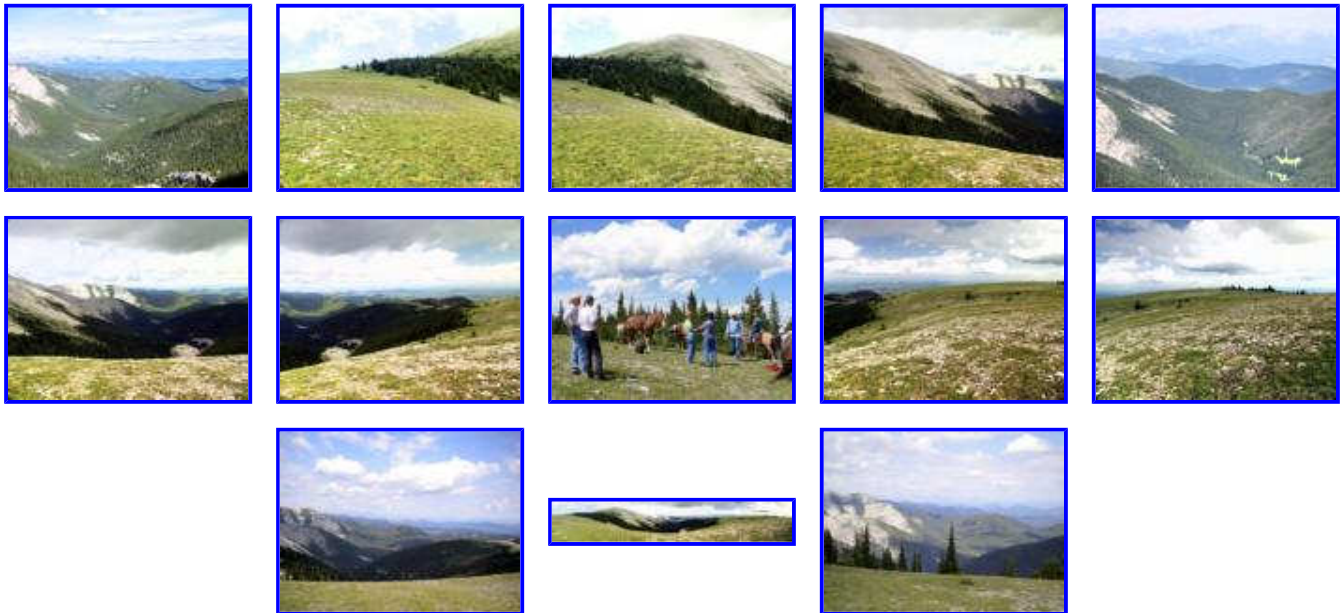
Important:

Vehicle access to the trailhead and parking area is subject to seasonal closure, usually opening in mid-May and closing after Canadian Thanksgiving (the second Monday in October). Note: For intermediate and experienced hikers. Wear hiking boots. Take ample water and protective gear. Never leave valuables in a car at trailheads. Use caution; bear activity is common in this area, and in all mountain locations. See:

<http://srd.alberta.ca/RecreationPublicUse/AlbertaBearSmart/BearsOutdoorRecreation.aspx>

Always consult park wardens and take appropriate precautions.

Pictures of surrounding area:



Revised 08 April 2013

Chapter 6 - First Light - 00 30 50



DVD capture *



Contributed photo

DVD Time Code = 00 30 50

Location: Hwy 1A, Stoney Native Reservation

GPS: 51d 8m 27s -114d 59m 29s

Map / Satellite Image: [Google Link](#)

Site Name: Sheep Rock

Travel Directions:

From Hwy 1 (Trans-Canada Hwy), take Morley Road, Exit 131, north 3.6 km to Hwy 1A, turn left (west) on 1A, 12 km to “Stoney Indian Park / Buffalo Paddock” sign. Turn left (south) at the “Peacekeepers” building (now a burned ruin), 0.8 km to gate, then go 1.5 km beyond the gate to the site (past the vandalized building with the peaked roof and the “WOMEN” and “MEN” signs on the front at approximately 0.7 km, then an additional 0.8 km). The site is on the right (south) side of the road. Note: The last 1 km of this road is rough; walk it if your vehicle can’t stand it.

[Alternately, if you are coming from the cliffs at Seebe (see Chapter 12, [01 09 28](#), and [01 09 38](#)), turn right (north) onto 1X (the road you came in on), go 2.1 km to intersection of 1A; go right (east) 8.8 km; turn right (south) at “Peacekeepers” building, proceed as directed above.]

The park is officially closed during wintertime though access by foot is feasible, weather permitting. You might want to contact Ray Greenwood, (403) 881-2614, for access arrangements, which may require payment of a \$5 fee. Security guards in the area have been known to save paperwork by collecting fees from visitors on the spot.

Remarks:

Although this is a park, please be mindful that it is Native land and worthy of special respect.

Most of the High Ridge footage was taken at nearby Moose Mountain. This shot (which is actually quite close to the locations of the Sheep Staging and Sheep Tangle scenes) captures a bit of the lovely azure Bow River.

Try as you might, you will never find the spot you see in the film. This image is a composite. For a fascinating explanation of how this and other effects were accomplished, see:

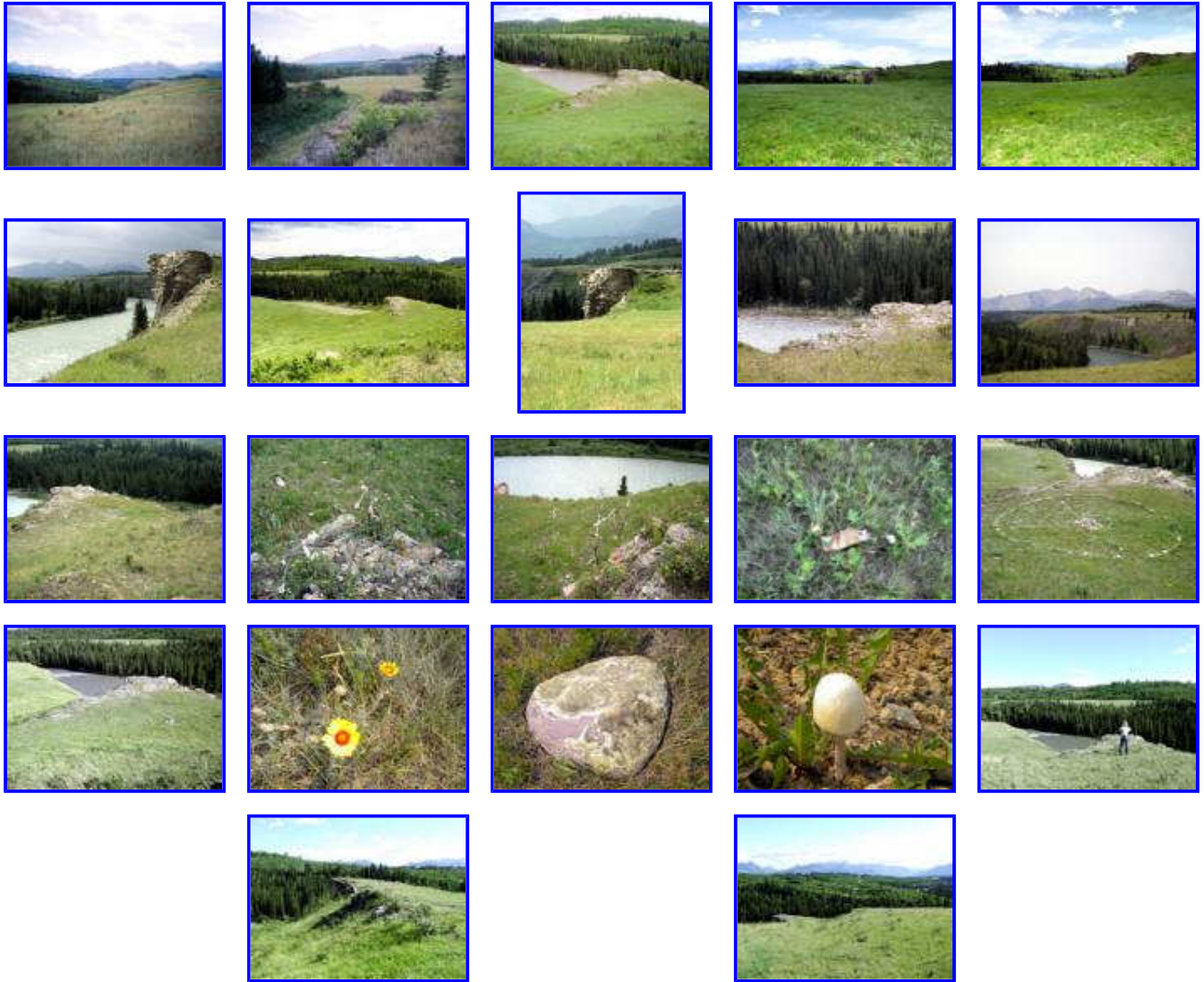
<http://www.youtube.com/watch?v=kPw5plmkd6Q> (Groupe Image Buzz Video)

Important:

Always obtain appropriate permission before entering private property and Native reserve lands.

You may encounter horses roaming. Drive slowly and be prepared to stop. Do not leave valuables in parked cars.

Pictures of surrounding area:



Revised 07 June 2013

Chapter 6 - First Light - 00 31 11



DVD capture



Contributed photo

DVD Time Code = 00 31 11

Location: Hwy 742, Goat Creek

GPS: 51d 3m 35.52s -115d 25m 51.54s

Map / Satellite Image: [Google Link](#)

Site Name: Pole Bridge

Travel Directions:

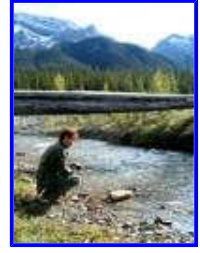
The Pole Bridge (Campsite #2) is at the northern end of Spray Valley Provincial Park, off Hwy 742, 7.3 km south of the Three Sisters Drive intersection in Canmore, and 2.1 km north of the Riding Ridge. The easiest way to access the site is to follow Hwy 742 and park at the Goat Creek Picnic Area. Walk south along Hwy 742 for approximately 200 meters. At the point where the utility lines cross Hwy 742 you will see a gravel road to your right (west). Turn right and follow the gravel road approximately 0.7 km downhill until you reach a clearing. Turn right and continue across the clearing, passing the “Get Goin’, Cowboy” Hillside (Fight Hill), and the Dozy Embrace site. If you encounter temporary fencing in this area, go around it to the right. As you approach Goat Creek, you will see the familiar pole bridge and campsite. For pictures taken during a hike to this location, see “Hike to Campsite #2” in **Albums**.

To reach Hwy 742 (also known as Spray Lakes Rd. / Smith-Dorrien Rd.): From Hwy 1 (Trans-Canada Hwy), use Exit 91 “Hwy 1A - Canmore.” Follow Bow Valley Trail 2.2 km, turn left (northwest) onto Railway Ave. Proceed 0.5 km and turn left (west) at Main St. (also known as 8th St.), go 0.6 km and turn left (south) onto Bridge Rd. (also known as 8th Ave. / Rundle Drive). At the “T” intersection, turn left (south) on Three Sisters Drive, proceed 0.6 km and turn right (west) at Spray Lakes Rd. (also known as Hwy 742). (Or simply follow the helpful “Kananaskis Country” signs throughout Canmore.) See map of [Canmore](#).

Remarks:

It is laundry day at Campsite #2! The glacier-fed waters of Goat Creek insure that colors won’t run and clothes don’t shrink. Of course, Jack washed the shirts regularly, in the gravely mistaken belief that this would enhance their value when they were subsequently sold on eBay.

Pictures of surrounding area:



Revised 24 April 2011

Chapter 6 - First Light - 00 31 20



DVD capture (reversed)



Contributed photo

DVD Time Code = 00 31 20

Location: Hwy 66, Moose Mountain, Sheep Summit

GPS: 50d 56m 31.8s -114d 48m 35.34s

Map / Satellite Image: [Google Link](#)

Site Name: "Ain't Queer" Mountainside

Travel Directions:

From Hwy 1 (Trans-Canada Hwy), take Exit 161A "Bragg Creek Rd / Hwy 22." Go south on Hwy 22 approximately 17.4 km to the 4-way stop in Bragg Creek. (Do not follow the "Bragg Creek West" sign.) Turn left at the 4-way stop (continue on Hwy 22) and go 3.4 km to the "T" intersection of Hwy 22 and Hwy 66. Turn right (west) onto Hwy 66 and go approximately 13.9 km to Moose Mountain Road. Turn right (north) onto Moose Mountain Road and follow it 7.0 km to the well-marked trailhead. The trail begins in the trees at the green vehicle barrier, located on the south side of the parking area. The site is about 0.5 km beyond the tree line to the north (right). (Note: Moose Mountain Road is unmarked; it is just west of the "Paddy's Flat" sign on Hwy 66.)

The Moose Mountain summit is 7.1 km from the parking area and trailhead, gaining 477 m (1,565') in elevation. Allowing time to explore filming locations, budget a total of 4 to 5 hours for a rewarding hike to and from the vast Moose Mountain meadows, where several sheep herding scenes were filmed. Mornings generally provide the most reliable weather conditions. See:

<http://www.braggcreek.ca/kananaskis/trails/moosemtn.htm>

http://www.braggcreek.ca/kananaskis/trails/moose_prairie.htm

<http://www.braggcreek.ca/kananaskis/outdoor.htm>

The hike to the meadows is a moderately strenuous ascent. Though no filming took place above the meadows, the adventurous may wish to keep climbing to the summit using a series of switchbacks leading to a fire lookout station. Budget approximately 50 minutes for the final ascent, along slippery shale surfaces.

Remarks:

Finding these sites has been a delightful adventure. As you might imagine, for every actual site we found, there were several contenders which would "almost" be right were it not for an inconvenient mountain, house, or road! Confronted with these annoyances, it was often tempting to assert that the filmmakers had indeed used the site in question and that any discrepancies were the result of special

effects! Some very elaborate theories were spun to explain some rather improbable image manipulation. Of course, after we had heard enough of our own lies, we went back to work and found the right place.

This scene is an exception. You will not find it in nature. After a lot of searching atop Moose Mountain, Steve Gin and Bob Sohomuch figured out that the image in the film is reversed! It is the only such *Brokeback* shot we have discovered.

Why? Did Ang Lee want the dog to face the other way? Did the dog refuse to cooperate? Is there something else about the composition of the shot that works better this way? We do not have a clue. Perhaps you do. If so, please let us know.

Important:

Vehicle access to the trailhead and parking area is subject to seasonal closure, usually opening in mid-May and closing after Canadian Thanksgiving (the second Monday in October). Note: For intermediate and experienced hikers. Wear hiking boots. Take ample water and protective gear. Never leave valuables in a car at trailheads. Use caution; bear activity is common in this area, and in all mountain locations. See:

<http://srd.alberta.ca/RecreationPublicUse/AlbertaBearSmart/BearsOutdoorRecreation.aspx>

Always consult park wardens and take appropriate precautions.

Pictures of surrounding area:



Revised 08 April 2013

Chapter 6 - First Light - 00 31 22



DVD capture



Contributed photo

DVD Time Code = 00 31 22

Location: Hwy 66, Moose Mountain

GPS: 50d 56m 33.06s -114d 48m 31.44s

Map / Satellite Image: [Google Link](#)

Site Name: "Ain't Queer" Mountainside

Travel Directions:

From Hwy 1 (Trans-Canada Hwy), take Exit 161A "Bragg Creek Rd / Hwy 22." Go south on Hwy 22 approximately 17.4 km to the 4-way stop in Bragg Creek. (Do not follow the "Bragg Creek West" sign.) Turn left at the 4-way stop (continue on Hwy 22) and go 3.4 km to the "T" intersection of Hwy 22 and Hwy 66. Turn right (west) onto Hwy 66 and go approximately 13.9 km to Moose Mountain Road. Turn right (north) onto Moose Mountain Road and follow it 7.0 km to the well-marked trailhead. The trail begins in the trees at the green vehicle barrier, located on the south side of the parking area. The site is about 0.5 km beyond the tree line to the north (right). (Note: Moose Mountain Road is unmarked; it is just west of the "Paddy's Flat" sign on Hwy 66.)

The Moose Mountain summit is 7.1 km from the parking area and trailhead, gaining 477 m (1,565') in elevation. Allowing time to explore filming locations, budget a total of 4 to 5 hours for a rewarding hike to and from the vast Moose Mountain meadows, where several sheep herding scenes were filmed. Mornings generally provide the most reliable weather conditions. See:

<http://www.braggcreek.ca/kananaskis/trails/moosemtn.htm>

http://www.braggcreek.ca/kananaskis/trails/moose_prairie.htm

<http://www.braggcreek.ca/kananaskis/outdoor.htm>

The hike to the meadows is a moderately strenuous ascent. Though no filming took place above the meadows, the adventurous may wish to keep climbing to the summit using a series of switchbacks leading to a fire lookout station. Budget approximately 50 minutes for the final ascent, along slippery shale surfaces.

Remarks:

Those who find the sheep to be a powerful metaphor for the boys' innocence often note that, in this shot, the sheep's once white wool appears to have darkened. The evening shadows are probably the cause of this illusion.

Imagery aside, the logistics of this scene are confusing. Did Jack leave his laundry duties at camp and join Ennis up on the mountaintop with the sheep before both returned back to camp that evening? Whatever happened, the herd of sheep at twilight provides a great backdrop for the memorable “I Ain’t Queer” scene.

Important:

Vehicle access to the trailhead and parking area is subject to seasonal closure, usually opening in mid-May and closing after Canadian Thanksgiving (the second Monday in October). Note: For intermediate and experienced hikers. Wear hiking boots. Take ample water and protective gear. Never leave valuables in a car at trailheads. Use caution; bear activity is common in this area, and in all mountain locations. See:

<http://srd.alberta.ca/RecreationPublicUse/AlbertaBearSmart/BearsOutdoorRecreation.aspx>

Always consult park wardens and take appropriate precautions.

Pictures of surrounding area:



Revised 28 January 2015

Chapter 6 - First Light - 00 31 33



DVD capture



Contributed photo

DVD Time Code = 00 31 33

Location: Hwy 66, Moose Mountain

GPS: 50d 56m 31.8s -114d 48m 35.34s

Map / Satellite Image: [Google Link](#)

Site Name: "Ain't Queer" Mountainside

Travel Directions:

From Hwy 1 (Trans-Canada Hwy), take Exit 161A "Bragg Creek Rd / Hwy 22." Go south on Hwy 22 approximately 17.4 km to the 4-way stop in Bragg Creek. (Do not follow the "Bragg Creek West" sign.) Turn left at the 4-way stop (continue on Hwy 22) and go 3.4 km to the "T" intersection of Hwy 22 and Hwy 66. Turn right (west) onto Hwy 66 and go approximately 13.9 km to Moose Mountain Road. Turn right (north) onto Moose Mountain Road and follow it 7.0 km to the well-marked trailhead. The trail begins in the trees at the green vehicle barrier, located on the south side of the parking area. The site, which is marked with a cairn, is about 0.5 km beyond the tree line to the north (right). (Note: Moose Mountain Road is unmarked; it is just west of the "Paddy's Flat" sign on Hwy 66.)

The Moose Mountain summit is 7.1 km from the parking area and trailhead, gaining 477 m (1,565') in elevation. Allowing time to explore filming locations, budget a total of 4 to 5 hours for a rewarding hike to and from the vast Moose Mountain meadows, where several sheep herding scenes were filmed. Mornings generally provide the most reliable weather conditions. See:

<http://www.braggcreek.ca/kananaskis/trails/moosemtn.htm>

http://www.braggcreek.ca/kananaskis/trails/moose_prairie.htm

<http://www.braggcreek.ca/kananaskis/outdoor.htm>

The hike to the meadows is a moderately strenuous ascent. Though no filming took place above the meadows, the adventurous may wish to keep climbing to the summit using a series of switchbacks leading to a fire lookout station. Budget approximately 50 minutes for the final ascent, along slippery shale surfaces.

Remarks:

The vast open spaces atop Moose Mountain, and all around it, stretch to the horizon affording perfect privacy. If there ever was a place to speak candidly, this is it. Instead, with the exchange "You know I ain't queer" "Me neither," that opportunity is squandered.

Tragically, this is the only intimate conversation Ennis and Jack share during their *Brokeback* summer. And it is a lie. In the decades that followed, the missed opportunities and lies would fester until they became too painful to bear.

Important:

Vehicle access to the trailhead and parking area is subject to seasonal closure, usually opening in mid-May and closing after Canadian Thanksgiving (the second Monday in October). Note: For intermediate and experienced hikers. Wear hiking boots. Take ample water and protective gear. Never leave valuables in a car at trailheads. Use caution; bear activity is common in this area, and in all mountain locations. See:

<http://srd.alberta.ca/RecreationPublicUse/AlbertaBearSmart/BearsOutdoorRecreation.aspx>

Always consult park wardens and take appropriate precautions.

Pictures of surrounding area:

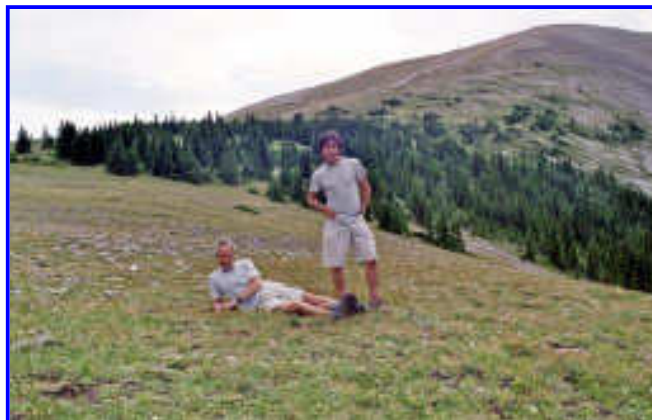


Revised 08 April 2013

Chapter 6 - First Light - 00 31 41



DVD capture



Contributed photo

DVD Time Code = 00 31 41

Location: Hwy 66, Moose Mountain

GPS: 50d 56m 31.8s -114d 48m 35.34s

Map / Satellite Image: [Google Link](#)

Site Name: "Ain't Queer" Mountainside

Travel Directions:

From Hwy 1 (Trans-Canada Hwy), take Exit 161A "Bragg Creek Rd / Hwy 22." Go south on Hwy 22 approximately 17.4 km to the 4-way stop in Bragg Creek. (Do not follow the "Bragg Creek West" sign.) Turn left at the 4-way stop (continue on Hwy 22) and go 3.4 km to the "T" intersection of Hwy 22 and Hwy 66. Turn right (west) onto Hwy 66 and go approximately 13.9 km to Moose Mountain Road. Turn right (north) onto Moose Mountain Road and follow it 7.0 km to the well-marked trailhead. The trail begins in the trees at the green vehicle barrier, located on the south side of the parking area. The site, which is marked with a cairn, is about 0.5 km beyond the tree line to the north (right). (Note: Moose Mountain Road is unmarked; it is just west of the "Paddy's Flat" sign on Hwy 66.)

The Moose Mountain summit is 7.1 km from the parking area and trailhead, gaining 477 m (1,565') in elevation. Allowing time to explore filming locations, budget a total of 4 to 5 hours for a rewarding hike to and from the vast Moose Mountain meadows, where several sheep herding scenes were filmed. Mornings generally provide the most reliable weather conditions. See:

<http://www.braggcreek.ca/kananaskis/trails/moosemtn.htm>

http://www.braggcreek.ca/kananaskis/trails/moose_prairie.htm

<http://www.braggcreek.ca/kananaskis/outdoor.htm>

The hike to the meadows is a moderately strenuous ascent. Though no filming took place above the meadows, the adventurous may wish to keep climbing to the summit using a series of switchbacks leading to a fire lookout station. Budget approximately 50 minutes for the final ascent, along slippery shale surfaces.

Remarks:

A "cairn" is a man-made pile of rocks that marks a site or trail. Steve Gin, and husband Don, have begun a cairn at this spot. Add to it if you care to. Another cairn, located 50 km to the northwest at Campsite #2, marks the site of the Dozy Embrace (see Chapter 5, [00 23 39](#)).

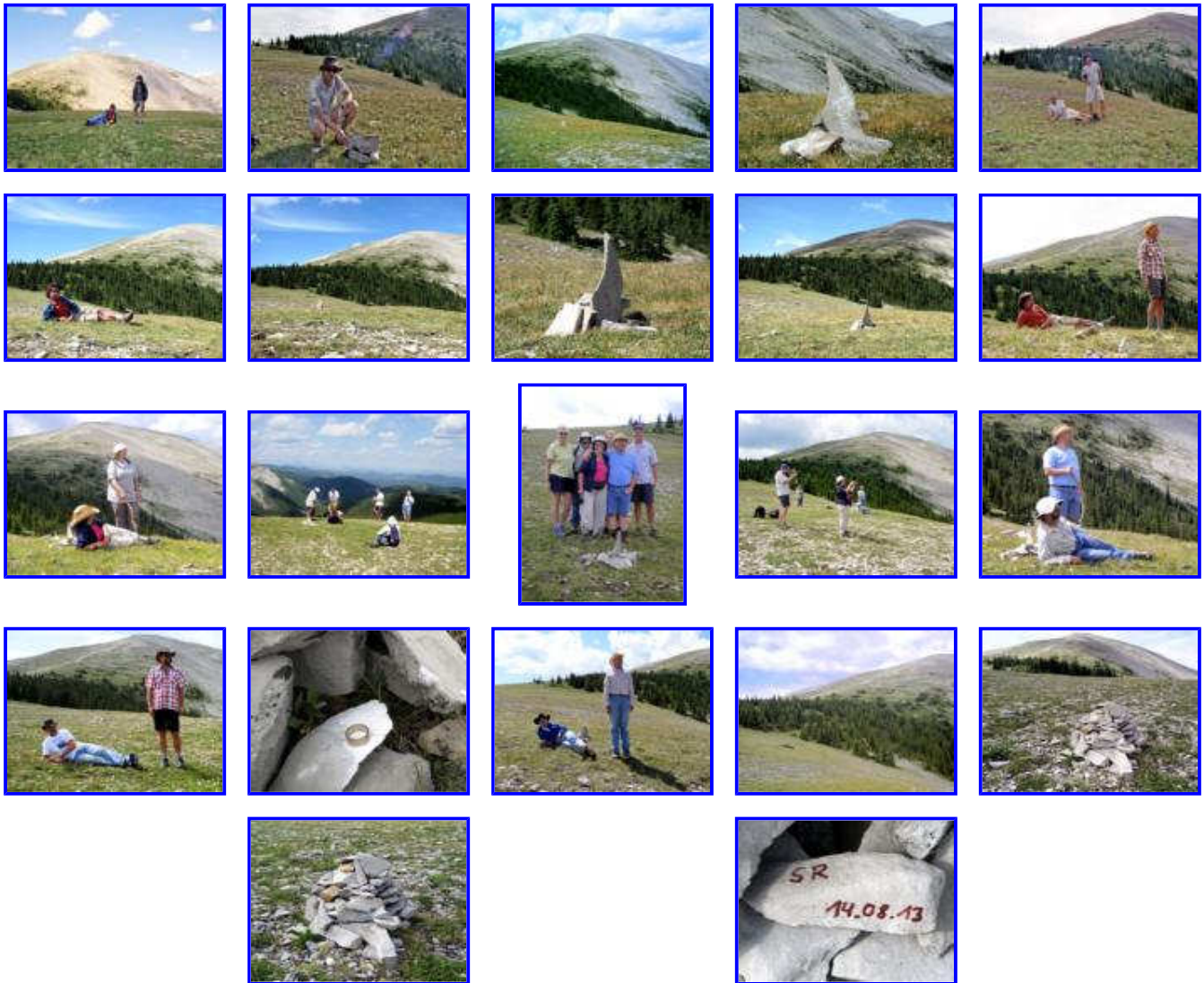
Important:

Vehicle access to the trailhead and parking area is subject to seasonal closure, usually opening in mid-May and closing after Canadian Thanksgiving (the second Monday in October). Note: For intermediate and experienced hikers. Wear hiking boots. Take ample water and protective gear. Never leave valuables in a car at trailheads. Use caution; bear activity is common in this area, and in all mountain locations. See:

<http://srd.alberta.ca/RecreationPublicUse/AlbertaBearSmart/BearsOutdoorRecreation.aspx>

Always consult park wardens and take appropriate precautions.

Pictures of surrounding area:



Revised 28 January 2015