

## Chapter 19 - The Power of Love - 02 02 50



DVD capture



Contributed photo

**DVD Time Code = 02 02 50**

**Location: Beiseker, AB, Town Dump**

**GPS: 51d 22m 55.26s -113d 32m 40.14s**

**Map / Satellite Image: [Google Link](#)**

**Site Name: Ennis's Trailer**

### **Travel Directions:**

At 1st Avenue and 6th Street, face the Beiseker Village Office (a former Canadian Pacific Railway station), turn south (left) on 1st Avenue and go 0.8 km. Turn right at the "Dump Gate" sign and go 0.3 km. The site is on the right, enclosed by a white wooden fence.

### **Remarks:**

The *Brokeback Mountain* story begins and ends in, of all places, trailers. What remains of Ennis's trailer site is limited to a grassy clearing, the roadway, and the field we see at the movie's powerful conclusion. A white fence surrounds the trailer location to protect this special ground. See:

<http://ca.epodunk.com/profiles/alberta/beiseker/2000191.html>

Locals were not allowed on site during the filming of the movie's conclusion, but they certainly knew something was going on "out by the dump." One group of barn roofers working nearby was told to "quit hammering" whenever the cameras were rolling. That request has a familiar ring to it, doesn't it?

### **Quotation:**

"Troy? Daddy, that was two years ago."

### **Pictures of surrounding area:**





Revised 27 June 2015

## Chapter 19 - The Power of Love - 02 03 01



DVD capture



Contributed photo

**DVD Time Code = 02 03 01**

**Location: Beiseker, AB, Town Dump**

**GPS: 51d 22m 55.26s -113d 32m 40.14s**

**Map / Satellite Image: [Google Link](#)**

**Site Name: Ennis's Trailer**

### Travel Directions:

At 1st Avenue and 6th Street, face the Beiseker Village Office (a former Canadian Pacific Railway station), turn south (left) on 1st Avenue and go 0.8 km. Turn right at the "Dump Gate" sign and go 0.3 km. The site is on the right, enclosed by a white wooden fence.

### Remarks:

Why did the producers clear vacant land and create a trailer park for this scene when there were plenty of trailer parks in the area? (We found at least four during the course of our search for this location.)

For one thing, it was necessary to destroy Ennis's trailer in order to obtain all of the camera positions required. Additionally, their made-to-order trailer park had no traffic, no nosy neighbors, no other sources of possible interference that could mar the shooting of this critical scene.

### Quotation:

"I reckon they can find themselves a new cowboy."

### Pictures of surrounding area:





Revised 27 June 2015

## Chapter 19 - The Power of Love - 02 03 15



DVD capture



Contributed photo

**DVD Time Code = 02 03 15**

**Location: Beiseker, AB, Town Dump**

**GPS: 51d 22m 55.26s -113d 32m 40.14s**

**Map / Satellite Image: [Google Link](#)**

**Site Name: Ennis's Trailer**

### **Travel Directions:**

At 1st Avenue and 6th Street, face the Beiseker Village Office (a former Canadian Pacific Railway station), turn south (left) on 1st Avenue and go 0.8 km. Turn right at the "Dump Gate" sign and go 0.3 km. The site is on the right, enclosed by a white wooden fence.

### **Remarks:**

Alma, Jr., the quiet and insightful daughter who understands her father in a way that other women never did, provides Ennis with something very precious: the chance to step back and reflect upon what it means to be 19 years old and in love.

### **Quotation:**

"To Alma and Kurt."

### **Pictures of surrounding area:**





Revised 27 June 2015

## Chapter 19 - The Power of Love - 02 07 45



DVD capture



Photo courtesy Steffi Schaefer.

**DVD Time Code = 02 07 45**

**Location: Hwy 1, Exit 98, Mount Lougheed and Windtower**

**GPS: 51d 1m 38.5s -115d 14m 52.8s**

**Map / Satellite Image: [Google Link](#)**

**Site Name: Postcard Mountains**

### **Travel Directions:**

Banff Gate Mountain Resort. Follow Hwy 1 (Trans-Canada Hwy) west from Calgary to Dead Man's Flats, Exit 98. Proceed 2.0 km south to the parking area.

### **Remarks:**

From here you have a postcard-perfect view of Mount Lougheed and nearby Windtower. Of course, no one could possibly herd sheep on these icy stone megaliths, but as the music builds and the tears flow, it makes little difference, does it? See:

<http://www.peakfinder.com/peakfinder.ASP?PeakName=Mount+Lougheed>

<http://www.peakfinder.com/MorePhotos.ASP?MtnId=558>

<http://www.peakfinder.com/peakfinder.ASP?PeakName=Windtower+Mountain>

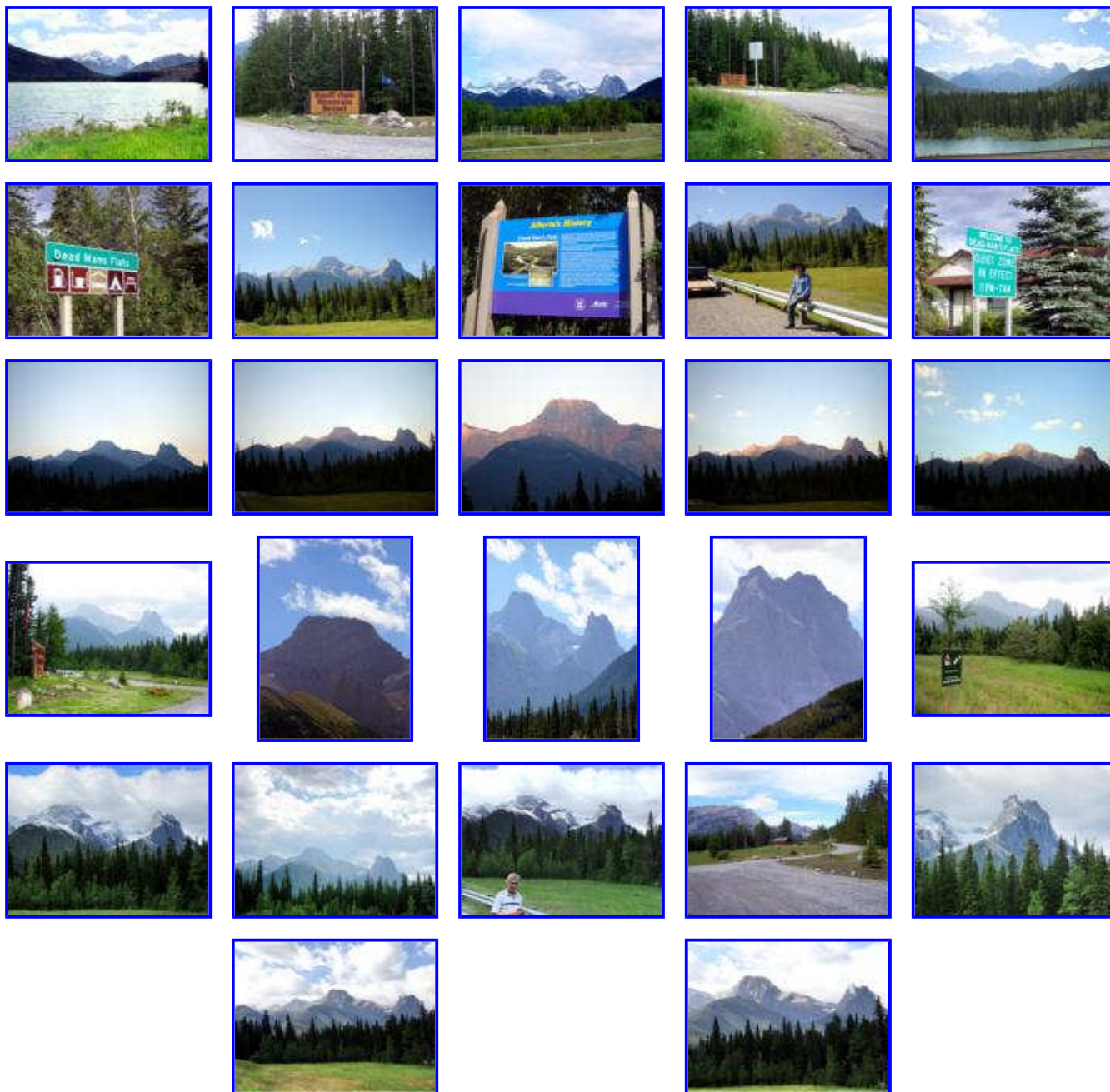
"I know where Brokeback Mountain is," declares possessive John Twist, who seems capable of sharing nothing more than his miserable life with others. But for the inspired people who have told the story in word and on film, Brokeback Mountain is a beacon of community, where respect, openness, and sharing are free to grow and blossom. It is that spirit that we seek to honor here.

### **Quotation:**

"Jack, I swear."

### **Pictures of surrounding area:**





Revised 25 June 2015



## Chapter 19 - The Power of Love - 02 07 47



DVD capture



Photo courtesy Paul Peterson.

**DVD Time Code = 02 07 47**

**Location: Beiseker, AB, Town Dump**

**GPS: 51d 22m 55.26s -113d 32m 40.14s**

**Map / Satellite Image: [Google Link](#)**

**Site Name: Ennis's Trailer Window**

### **Travel Directions:**

At 1st Avenue and 6th Street, face the Beiseker Village Office (a former Canadian Pacific Railway station), turn south (left) on 1st Avenue and go 0.8 km. Turn right at the "Dump Gate" sign and go 0.3 km. The site is on the right, enclosed by a white wooden fence.

### **Remarks:**

Viewing the image framed by the trailer window (often through tears), one wonders if the field and sky, with their assuring hues of green, yellow (a field of canola), and blue, are the real thing. Standing at the actual location, they seem to be. Never mind that it is next to a dump. It is the serene image that forms a fitting apostrophe to Jack and Ennis's love, which will endure for as long as the *Brokeback* story is told. See:

<http://ca.epodunk.com/profiles/alberta/beiseker/2000191.html>

### **Pictures of surrounding area:**





Revised 27 June 2015